



1532 North Opdyke Rd Suite #450, Auburn Hills, MI 48326

Phone: (248) 340-8890 • (800) 854-6951 Fax: (248) 340-8892

order online www.dennisuniform.com

National Customer Service 800.854.6951

WELCOME TO DENNIS

We look forward to working with you this year! Since 1920, DENNIS has sewn the best uniforms available in our Portland, Oregon factory. We are a family-owned business committed to quality, customer service, and education. Our goal is to have every student in uniform by the first day of school. If you need any help, please do not hesitate to contact our National Customer Service Department 800.854.6951.

EASY WAYS TO SHOP

- ◆ Store, online, phone/fax/mail order.
- ◆ DENNIS accepts Visa, Mastercard, Discover & checks in US Dollars.
- ◆ Call National Customer Service for custom garments.

ORDER ONLINE

- ◆ www.dennisuniform.com
- ◆ Enter school code: **MI0811**

NATIONAL CUSTOMER SERVICE

800.854.6951 fax 877.291.5480

Hours: Monday-Friday 8am-5pm PST

Extended summer hours

RETURNS & EXCHANGES

DENNIS guarantees the quality of workmanship and fabrics on all garments.

Merchandise will be accepted for return or exchange within 60 days.

Merchandise must be accompanied by sales receipt, be unworn, unwashed, and unaltered, with tags intact.

There are no returns or exchanges on custom items.

Returns / exchanges / defective garments accepted at any branch store, or by mailing to:

DENNIS Uniform, 135 SE Hawthorne Blvd,
Portland, Oregon 97214

National Customer Service 800.854.6951

UNIFORM PRICING EFFECTIVE MAY 1, 2011

AUBURN HILLS STORE

248.340.8890 fax 248.340.8892

REGULAR STORE HOURS

Tuesday 10am – 6pm

Wednesday-Thursday

10am – 5pm

Saturday 10am – 2pm

EXTENDED SUMMER HOURS

August 1-September 5

Monday-Friday 10am – 6pm

Saturday 10am – 2pm

Labor Day 10am – 2pm

DIRECTIONS

From Detroit: Take I-75 north to Auburn Hills and exit at University Dr. Head west on University Dr to Opdyke Rd. Turn north on N Opdyke Rd. DENNIS is located on the east side at 1532 N Opdyke Rd.



DENNIScrip, Gift Scrip & AFP Vouchers

- DENNIScrip may be used at DENNIS locations, in-school sale events, and mail order. Excludes online and phone.
- Maximum change made is \$5.
- DENNIScrip is not returnable or refundable for dollars
- DENNIScrip is good forever!

DENNIS PROMOTIONS CALENDAR for 2011 and 2012

January · New Year's Savings*

10% savings on all purchases & orders. . . phone, mail, internet and in-store.

June 10-July 10 · Early Bird Savings*

10% savings on all purchases & orders. . . phone, mail, internet and in-store.

SPECIAL IN-STORE ONLY SAVINGS for 2011 and 2012

October through May · DENNIS Advantage Card Savings

Earn fifteen \$10 stamps on your DENNIS advantage card and save \$10 on your next in-store purchase.

March · Double Punch Month

Earn 2 stamps for every \$10 purchase on your DENNIS Advantage Card. Watch for our emails announcing DENNIS specials!

*excludes marked down items

ST. PAUL THE APOSTLE SCHOOL

School Code: MI0811

2750 Burton Street SE; Grand Rapids, MI 49546

Girls, grades: 1-5 JUMPERS



Girls 3-20	\$43.75
Girls 6½-16½	\$44.75

Item #: 18631A-201

Douglas Plaid-Knife Pleats (265)

Girls, grades: 6-8 SKIRTS



Girls 3-20	\$41.50
Girls 6½-16½	\$42.50
Juniors 1-19	\$43.50
Juniors 21-25	\$43.50

Item #: 008680-201

Douglas Plaid-Center box pleat (265)

Girls, grades: 1-8 SKORTS



Girls 3-20	\$43.00
Girls 6½-16½	\$49.00
Juniors 1-19	\$49.00
Juniors 21-25	\$49.00

Item #: 035210-201

Douglas Plaid w/Tabs (265)

Optional

Girls, grades: 1-8 BLOUSES



Youth 4-16	\$16.00
Adult S-2XL	\$17.00

Item #: 00080A-911

White BC S/S-Peter Pan Collar (119)

Girls, grades: 1-8 BLOUSES



Youth 4-16	\$18.00
Adult S-2XL	\$19.00

Item #: 00080C-911

White BC L/S-Peter Pan Collar (119)

Girls, grades: 1-8 CARDIGAN



Youth 2XS-XL	\$25.50
Adult S-XL	\$29.50

Item #: 060000-976

Navy Crew Neck (067)

Girls, grades: 1-8 ACCESSORIES



One size	\$5.00
----------	--------

Item #: 004880-201

Padded Headband-Douglas Plaid (265)

Girls, grades: 1-8 ACCESSORIES



One size	\$5.00
----------	--------

Item #: 005090-201

Scrunchy-Douglas Plaid (265)

Girls & Boys, grades: 1-8 TURTLENECK



Youth 2XS-XL	\$2.00
Adult S-3XL	\$2.00

Item #: 08100C-973

Dk Green (136)

Girls & Boys, grades: 1-8 POLO

Youth 2XS-XL \$16.00
Adult S-3XL \$18.00

Item #: 08300A-973
White Jersey S/S (119)
Dk Green Jersey S/S (136)

Girls & Boys, grades: 1-8 POLO

Youth 2XS-XL \$18.00
Adult S-3XL \$20.00

Item #: 08300C-973
White Jersey L/S (119)
Dk Green Jersey L/S (136)

Girls & Boys, grades: 1-8 SHIRTS

Youth 4-20 \$18.00
Adult S-3XL \$21.50

Item #: 02900A-950
White Oxfordcloth-S/S (119)

Girls & Boys, grades: 1-8 SHIRTS

Youth 4-20 \$19.00
Adult S-3XL \$23.00

Item #: 02900C-950
White Oxfordcloth-L/S (119)

Girls & Boys, grades: 1-8 CARDIGAN

Youth 2XS-XL \$30.50
Adult S-XL \$34.50
Adult 2XL-3XL \$40.50

Item #: 063000-976
Navy V-Neck (067)

Girls & Boys, grades: 1-8 PULLOVER

Youth 2XS-XL \$26.00
Adult S-XL \$30.00

Item #: 065000-976
Navy V-Neck (067)

Girls & Boys, grades: 1-8 SWEATER VEST

Youth 2XS-XL \$22.50
Adult S-XL \$25.50

Item #: 066000-976
Navy V-Neck (067)

Boys, grades: 1-5 PANTS

Reg 3-7 or Slim 3-7 \$21.00
Reg 8-16 or Slim 8-16 \$24.50
Husky 25-38 \$29.00
Prep 26-32 \$28.00
Mens 33-44 \$30.00

Item #: 070000-964
Boys Navy Rassler Twill-Plt Frt-DENNIS Durables (067)

Boys, grades: 1-5 PANTS

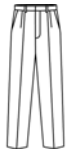
Reg 3-7 or Slim 3-7 \$24.50
Reg 8-16 or Slim 8-16 \$28.50
Husky 25-38 \$33.00
Prep 27-32 \$30.00
Mens 33-44 \$34.00

Item #: 075000-964
Navy Twill-Rlxd Fit-Pleat Frt (067)

Boys, grades: 1-5 PANTS

Reg 3-7 or Slim 3-7 \$24.50
Reg 8-16 or Slim 8-16 \$28.50
Husky 25-38 \$33.00
Prep 27-32 \$30.00
Mens 33-48 \$34.00

Item #: 075500-964
Boys Navy Twill-Rlxd Fit 65P/35C-Flat Frt (067)

Boys, grades: 6-8 PANTS

Reg 3-7 or Slim 3-7	\$21.00
Reg 8-16 or Slim 8-16	\$24.50
Husky 25-38	\$29.00
Prep 26-32	\$28.00
Mens 33-44	\$30.00

Item #: 070000-964

Boys Khaki Rassler Twill-Plt Frt-DENNIS Durables (049)

Boys, grades: 6-8 PANTS

Reg 3-7 or Slim 3-7	\$24.50
Reg 8-16 or Slim 8-16	\$28.50
Husky 25-38	\$33.00
Prep 27-32	\$30.00
Mens 33-48	\$34.00

Item #: 075500-964

Boys Khaki Twill-Rlxd Fit 65P/35C-Flat Frt (049)

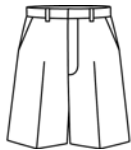
Boys, grades: 1-5 WALK SHORTS

Reg 3-7 or Slim 3-7	\$19.50
Reg 8-16 or Slim 8-16	\$22.50
Husky 26-38	\$26.50
Prep 27-32	\$26.50
Mens 33-48	\$27.00

Item #: 040620-964

Boys Navy Twill Flat Front (067)

May be worn Aug-Sept and May - June

Boys, grades: 6-8 WALK SHORTS

Reg 3-7 or Slim 3-7	\$19.50
Reg 8-16 or Slim 8-16	\$22.50
Husky 26-38	\$26.50
Prep 27-32	\$26.50
Mens 33-48	\$27.00

Item #: 040620-964

Boys Khaki Twill Flat Front (049)

May be worn Aug-Sept and May - June

Boys, grades: 6-8 PANTS

Reg 3-7 or Slim 3-7	\$24.50
Reg 8-16 or Slim 8-16	\$28.50
Husky 25-38	\$33.00
Prep 27-32	\$30.00
Mens 33-44	\$34.00

Item #: 075000-964

Khaki Twill-Rlxd Fit-Pleat Frt (049)

Boys, grades: 1-5 WALK SHORTS

Reg 3-7 or Slim 3-7	\$19.00
Reg 8-16 or Slim 8-16	\$22.50
Husky 26-38	\$26.50
Prep 26-32	\$26.50
Mens 33-44	\$27.00

Item #: 040600-964

Boys Navy Rassler Twill Pltd Frt (067)

May be worn Aug - Sept and May - June

Boys, grades: 6-8 WALK SHORTS

Reg 8-16 or Slim 8-16	\$22.50
Husky 26-38	\$26.50
Prep 26-32	\$26.50
Mens 33-44	\$27.00

Item #: 040600-964

Boys Khaki Rassler Twill Pltd Frt (049)

May be worn Aug-Sept and May - June

Girls' Jumpers, Skirts & Skorts, Pants & Walk shorts

students' body measurements

size	chest	waist	hip	skirt length	length by style				
					3521 skort length*	ankle-length skirt	walk shorts length	4040 pants inseam	4030 flat-front pants inseam
G3	23	21	24	11	10.25	—	10.25	15.25	19.25
G4	24	22	25	12	10.75	—	11	16.75	20.25
G5	24.5	22.5	26	13	11.5	—	11.75	18.5	21.25
G6	25	23	26.5	14	12	—	12.5	20.25	22.25
G6x		23.5	27		12.75	—	13.25	22	23.25
G7	26	23.5	27.5	15	14.75	28.5	14	24	24
G8	27	24	28.5	16	15.25	29.5	14.75	25.5	25.5
G10	29	25	30.5	17	15.75	30.5	15.5	26.5	27.75
G12	30.5	26	33	18	16.5	31.5	16.5	27	28.25
G14	32	27	35	19	17	32.5	17.5	27.75	29
G16	34	28	37	20	17.75	33.5	18.25	28	29.25
G18	36	29	39	20	18.5	33.5	19	28	29.25
G20	38	30	41	20	18.75	33.5	19.25	28	29.25
Half (plus) sizes									
H6.5	27	25	28.5	14	12.75	—	12.5	20.25	—
H8.5	29	26	30.5	16	15.25	—	14.75	25.5	—
H10.5	31	27	32.5	17	15.75	—	15.5	26.5	—
H12.5	32.5	28	35	18	16.5	—	16.5	27	—
H14.5	34	29	37	19	17	—	17.5	27.75	—
H16.5	36	30	39	20	17.75	—	18.25	28	—

*3550 longer skort measures 3" longer

Girls' Pleat-front Pants (#4040) are available in slim sizes. Slim sizes run 2" smaller in waist and hips than regular sizes and are available in sizes S4, S5, S6, S7, S8, S10, S12, S14, S16.

Junior Skirts & Skorts

students' body measurements length by style

junior size	waist	hip	skirt length	length by style				
				3521 skort length*	ankle-length skirt	walk shorts length	4040 pants inseam	4030 flat-front pants inseam
J1	25	35.5	19	17.5	35	16.25	30.75	32.25
J3	26	36.5	19	17.75	35	16.5	30.75	32.25
J5	27	37.5	19	18	35	16.75	31	32.5
J7	28	38.5	20	18.25	35	17	31.25	32.5
J9	29	39.5	20	18.5	35	17.25	31.25	32.75
J11	30	40.5	20	18.75	35	17.5	31.25	32.75
J13	31.5	42	20	19	35	17.75	31.25	32.75
J15	33	43.5	21	19.25	35	18	31.5	33
J17	34.5	45	21	19.5	35	18.25	31.5	33
J19	36	46.5	21	19.75	35	18.5	31.75	33.25

*3550 longer skort measures 3" longer

Socks

sock size	shoe size
S	youth 7-10.5
M	youth 10.5-adult 3
L	adult 4-8
XL	adult 10-13

Youth Cable Tights

youth size	height	weight
S	41-49"	42-56#
M	49-56"	50-80#
L	52-60"	70-105#

Youth Nylon Tights

youth size	height	weight
XS	36-40"	35-50#
S	41-46"	50-65#
M	46-50"	65-80#
L	51-55"	80-96#
XL	56-60"	96-105#

Junior Nylon Tights

junior size	height	weight
S/M	5'-5'4"	85-120#
M/Tall	5'4"-5'8"	115-140#

Girls' Blouses*

size	blouse chest	butterfly/camp shirt chest only	wing collar blouse
G3	22	23	—
G4	23	24	—
G5	—	24.5	—
G6	24	25	—
G6x	—	25.5	—
G7	—	26	—
G8	25	27	—
G10	27	29	29
G12	29	30.5	30.5
G14	31	32	32
G16	33	34	34

* order the same size as jumper or skirt

Juniors' & Women's Blouses

junior size	camp shirt/wing collar blouse chest	women's size	chest blouse
J1	34	S	30-32
J3	35	M	34-36
J5	36	L	38-40
J7	37	XL	42-44
J9	38	2XL	46-48
J11	39	3XL	50-52
J13	40.5		
J15	42		
J17	43.5		
J19	45		

Girls' Polo Shirt*

size	chest	length of garment
2XS	22	16
XS	24	17
S	26	18
M	27	19.5
L	29	21
XL	31	22

Juniors' Polo Shirt*

size	chest	length
XS	35	23.5
S	37	24.5
M	39	25
L	41	26
XL	44	26.5
2XL	47	27

*garment is styled to have a trim fit

Boys' Pants & Walk shorts*

boys' size	waist	short length	pant inseam
3	21.5	12	14.5
4 slim	20	—	16
4	22	12.5	16
5 slim	20.5	—	17.5
5	22.5	13	17.5
6 slim	21	—	19.5
6	23	13.5	19.5
7 slim	21.5	—	20
7	23.5	14	20
8 slim	22	—	21.5
8	24	15	21.5
9 slim	22.5	—	23
9	24.5	—	23**
10 slim	23	—	24
10	25	16.5	24
11 slim	23.5	—	25**
11	25.5	—	25
12 slim	24	—	26.5
12	26	17.25	26.5
14 slim	25	—	28
14	27	17.75	28
16 slim	26	—	29.5
16	28	17.25	29.5

* sizes 4-10 have elastic in back waistband

** sizes 9 & 11 not available in 7900 & walkshorts

Husky/Prep Pants & Walk shorts

waist size	husky shorts* length	prep shorts length	husky pants inseam	prep pants inseam
26	14.25	19**	21.5	—
27	15.75	19	22.5	32
28	16.25	19.25	24	32
29	16.75	19.5	25.5	32
30	17.25	19.75	27	32
31	17.75	20	27.5	32
32	18.25	20.25	28.5	32
33***	18.75	20.5	29.5	36
34	19.25	20.75	29.5	36
36	19.75	21.25	30.5	36
38	—	21.75	31.5	36
40	—	22.25	—	36
42	—	22.5	—	36
44	—	22.75	—	36

* husky sizes have elastic in waistband

** twill walk shorts only

*** waist size 33" and up are 36" unhemmed

T-Shirts, Jackets & Sweatshirts

youth size	t-shirts garment size	jackets/sweatshirts garment size
XS	N/A	2-4
S	6-8	6-8
M	10-12	10-12
L	14-16	14-16
XL	N/A	18-20

adult size	garment size
S	34-36
M	38-40
L	42-44
XL	46-48

Gym Shorts & Sweatpants

youth size	gym shorts waist	sweatpants waist
S	21-22	22-24
M	23-24	24-26
L	25-26	26-28

adult size	gym shorts waist	sweatpants waist
XS	24-26	N/A
S	28-30	30-32
M	32-34	34-36
L	36-38	38-40
XL	40-42	42-44

Pull-on Pants & Shorts

youth size	waist	pants inseam
2XS	21-22	16
XS	22-23	19
S	23-24	22
M	25-26	25
L	27-28	27
XL	29-30	28

adult size	waist	pants inseam
XS	25-27	31.5
S	28-30	32
M	31-33	32.5
L	34-36	33
XL	37-39	33.5
2XL	40-42	34

Shirts

youth size	chest
4	22
6	24
8	26
10	28
12	30
14	32
16	34
18	36
20	38

adult size	neck
S	14.5
M	15.5
L	16.5
XL	17.5
2XL	18.5

Knit Shirts

youth size	chest
2XS	25
XS	27
S	29
M	32
L	36
XL	38

adult size	chest
S	38
M	42
L	46
XL	50
2XL	54
3XL	58

MEASUREMENTS

Measurements on chart are body measurements

chest/bust:	measure the fullest part
waist:	measure at the traditional waist, the narrowest part of the waist—all styles are sized based on this measurement.
hips:	stand heels together; measure fullest part
rise:	measure bottom of waistband at the back around crotch to bottom of waistband front
waist length:	measure from nape of neck to waist
inseam:	measure from crotch to top of shoe
skirt length:	measure from bottom of waistband

SPECIAL SIZES require these measurements

jumpers:	bust/ waist/ hip/ skirt length/ waist length
skirts/skorts:	waist/ hip/ skirt length
pants:	waist/ hip/ inseam
walk shorts:	waist/ hip/ walk short length

